



## 24GHz Doppler Transceiver AMG004-B

### Features

- Direction of motion identification
- Low phase noise
- Compact size
- 14 dB RF amplifier
- Vehicule detection up to 150 m

### Applications

- Speed measurement
- Traffic monitoring
- Mobile speed display
- Security - presence detection

### Specifications

#### RF specifications

Frequency	K-band (24.05-24.25 GHz)
Output power	1mW (EIRP<20dBm)
Frequency stability	0,2 MHz/° C
Noise level (100 Hz - 10 kHz)	6 µVrms
Pushing	-90 dBc/Hz
Mixer conversion loss (typ.)	+2 dB
I/Q amplitude balance	2 dB
I/Q phase balance	±20 Deg

#### Antennas

Beamwidth (-3 dB) Horiz	8 Deg
Side-lobe level Horiz	<-24 dB
Beamwidth (-3 dB) Vert	20 Deg
Side-lobe level Vert	<-16 dB
Gain per antenna	20 dB

#### Compliant with

EN300440

#### DC specifications

Supply voltage	+5V
Supply current	150 mA

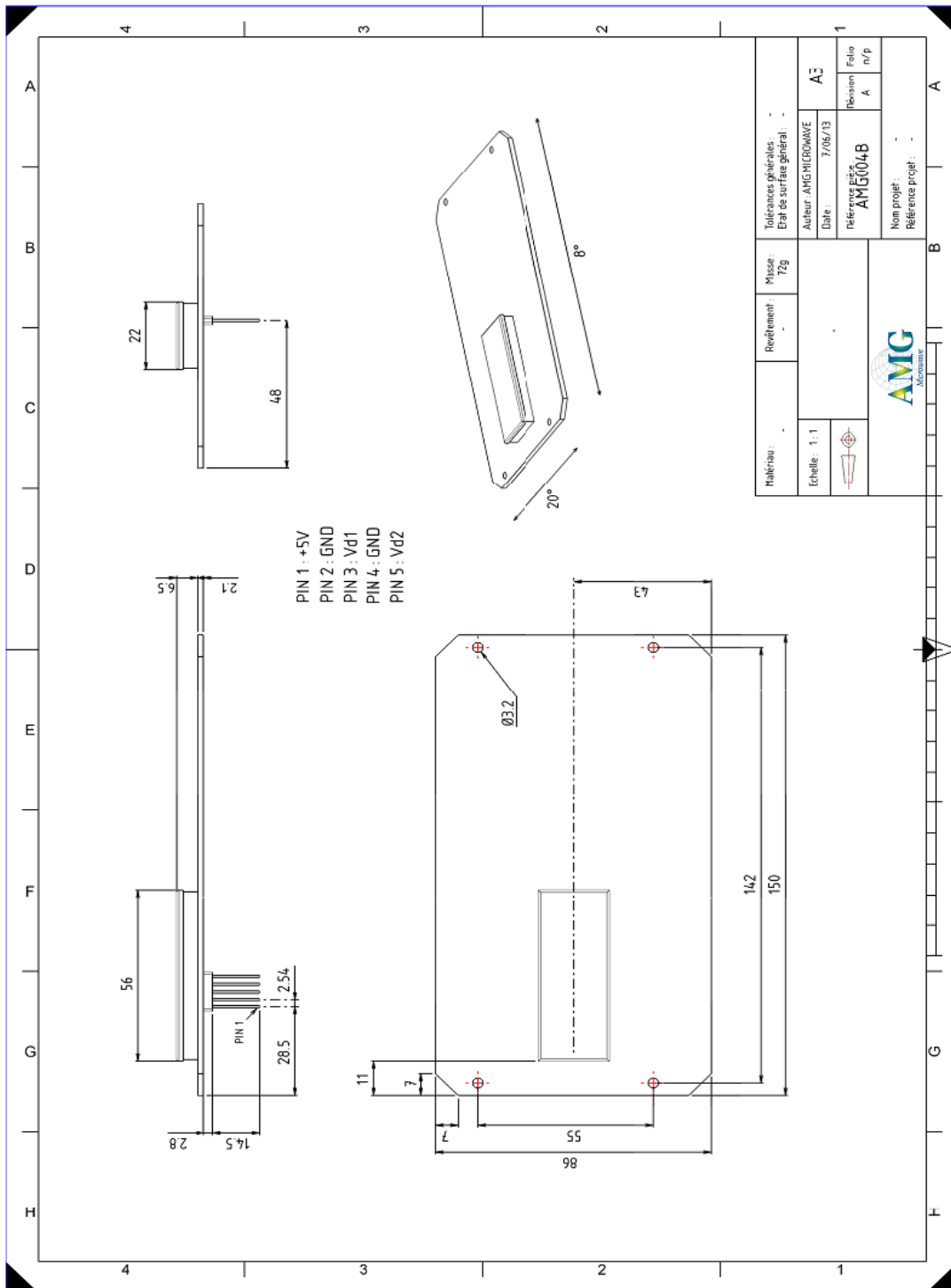
#### Mechanical specifications

Dimensions	150 x 86 x 10mm
Weight	72g
Connector	2.54mm step 5 pins connector

#### Environmental conditions

Operating temperature	-30° C..+70° C
Storing temperature	-40° C..+80° C

# Outline drawing



## DISCLAIMER

Different technical specifications are possible upon request, AMG reserves the right to make modifications to the design and characteristic of the product at any time and without prior notice