

## 24GHz Doppler Transceiver AM027-003

### Features

- VCO 24GHz
- Direction of motion identification
- Very high immunity to adjacent traffic lanes

### Applications

- Speed measurement
- Distance measurement
- Mobile speed display
- Security - Presence detection

## Specifications

### RF specifications

Frequency	24.125 GHz $\pm$ 20MHz
Tuning bandwidth	$\pm$ 35(min) à $\pm$ 60(max)MHz
tuning capacitor port	220 pf
Output power	-8 $\pm$ 3 dBm
Frequency stability	0,25 MHz/° C
Noise level (100 Hz - 10 kHz)	7 $\mu$ Vrms
RF pre-amplifier	12 dB
I/Q amplitude balance	2 dB
I/Q phase balance	$\pm$ 20 Deg

### Antennas

Beamwidth (-3 dB) Horiz	5.8 Deg
Side-lobe level Horiz	<-25 dB
Beamwidth (-3 dB) vert	6.1 Deg
Side-lobe level vert	<-25 dB
Gain	27 dB

### Compliant with

EN300440

### DC specifications

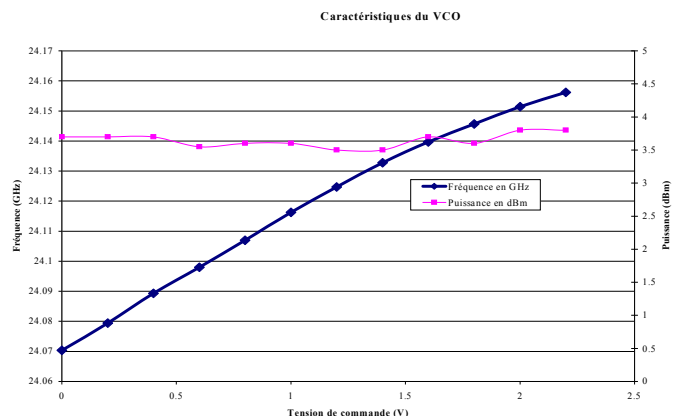
Supply voltage Vd	+5V $\pm$ 5%
Supply current Id (max)	90 mA
Tuning voltage Vtune	0 à 2.5V
Tuning current Itune (max)	100 $\mu$ A
Grid voltage Vg	-5V $\pm$ 10%
Grid current Ig (max)	4 mA

### Mechanical specifications

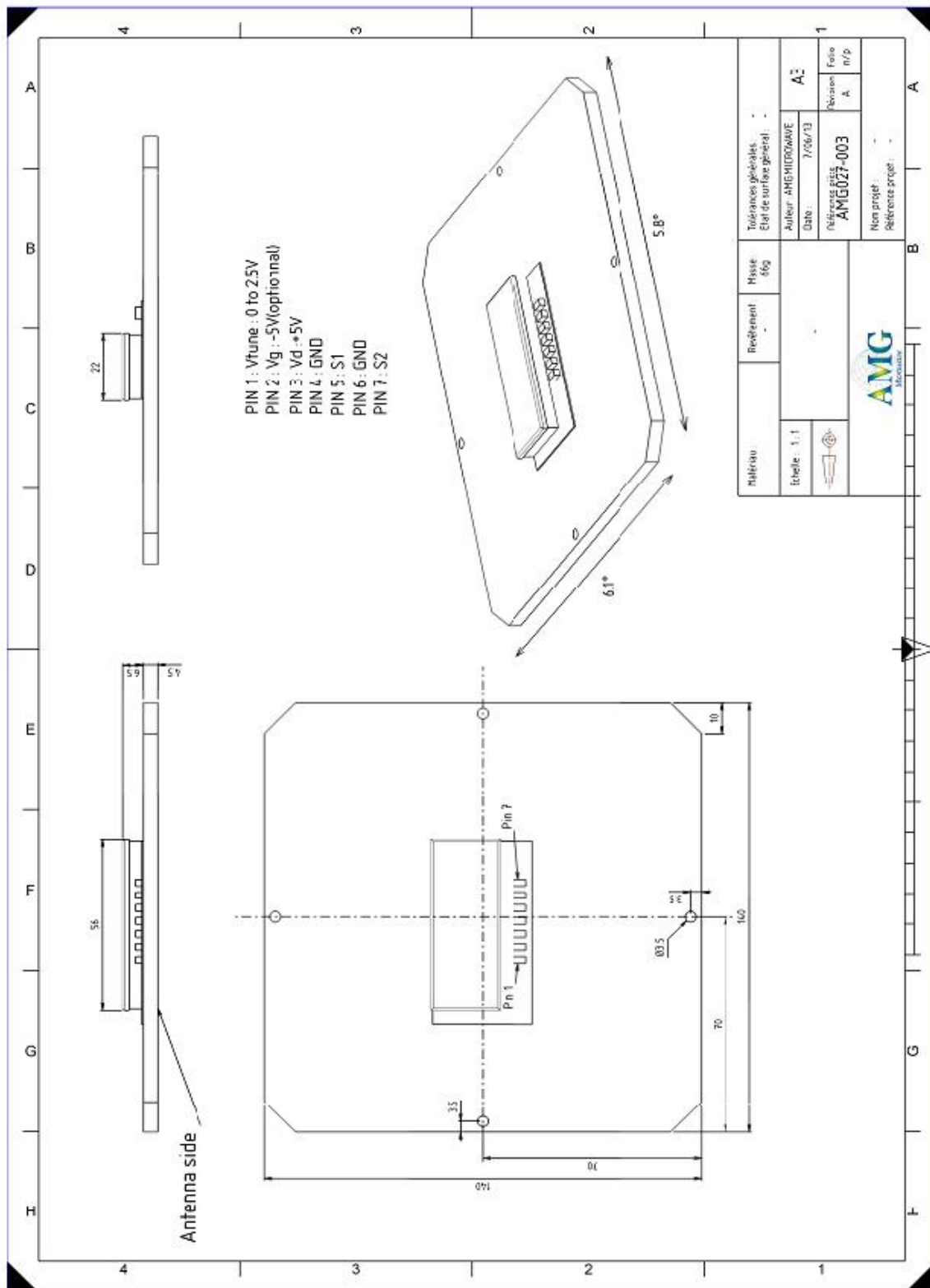
Dimensions	140 x 140 x 12mm
Connector	Solder pads

### Environmental conditions

Operating temperature	-30° C..+70° C
Storing temperature	-40° C..+80° C



# Outline drawing



## DISCLAIMER :

Different technical specifications are possible upon request, AMG reserves the right to make modifications to the design and characteristic of the product at any times and without prior notice