

## 24GHz planar antenna

### Features

- Thickness : 3.5mm (without connector)
- Waveguide (WR42) or SMA connector

### Applications

- Sensors
- Point to point link

## Specifications

### RF specifications

Frequency	24.150 GHz $\pm$ 100MHz
Beamwidth (-3 dB) Horiz	6 Deg ( $\pm$ 0.5)
Sidelobe level Horiz	<-20 dB
Beamwidth (-3 dB) Verti	12 Deg ( $\pm$ 1)
Sidelobe level Verti	<-25 dB
Nominal gain	24 dBi
VSWR (24.125 $\pm$ 50MHz) :	< 2:1

### Connector

Waveguide WR42 or SMA female

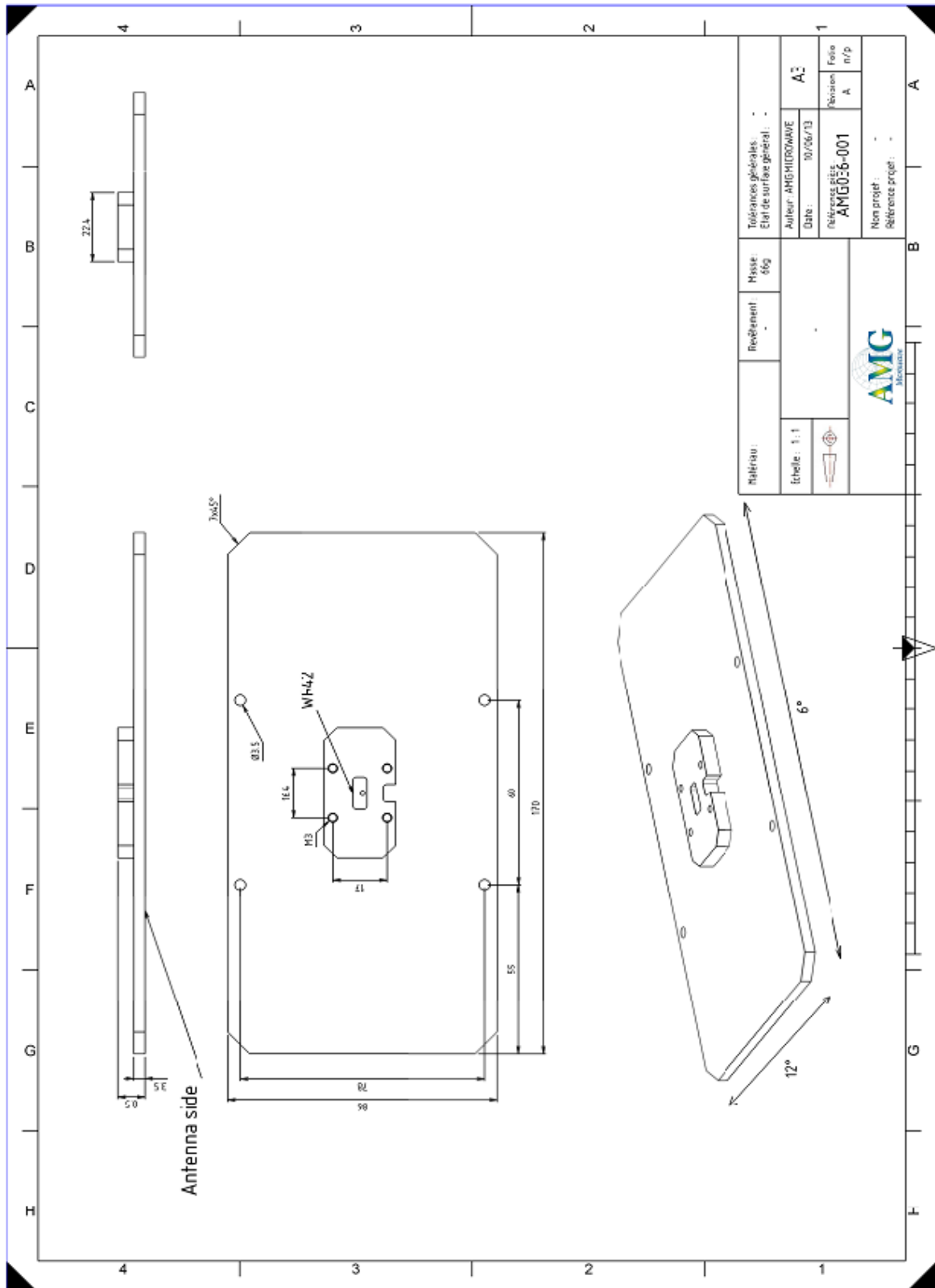
### Mechanical specifications

Size (with waveguide WR42)	170 x 86 x 8.5mm
Weight	

### Environmental parameters

Operating temperature	-30° C..+70° C
Storing temperature	-40° C..+80° C

# Outline drawing



## DISCLAIMER :

Different technical specifications are possible upon request, AMG reserves the right to make modifications to the design and characteristic of the product at any times and without prior notice