

# LOW COST DOPPLER TRANSCEIVER

AMG0091 - Radar sensors

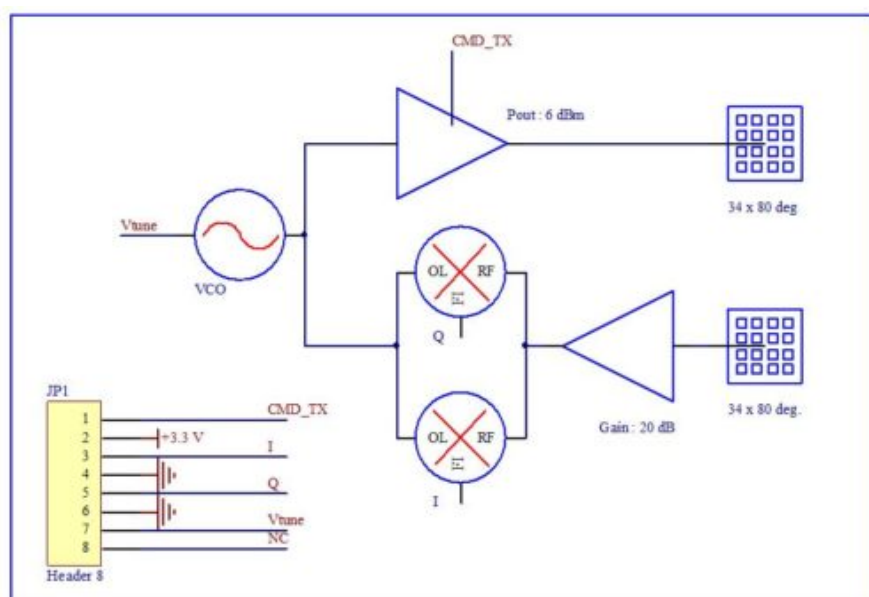
- Low cost design
- Extended temperature range
- Detection distance > 80m for a vehicle
- High sensitivity
- Low consumption
- Suited to CW or FMCW radar modulation

## DESCRIPTION

This transceiver is a small-sized Doppler module which operates in the K-band at 24 GHz. It is a cost-effective solution designed to deliver great versatility and outstanding detection performance for low cost applications such as smart lighting controls, door opening sensors, movement detectors and automobile blind spot or anti-collision systems.

The AMG0091 is suited to both CW and FMCW radar modulations.

## USE



## APPLICATIONS

- Smart lighting controls
- Security systems - presence detection
- Industrial sensors
- Door opening systems
- Automobile
- Speed measurement

## ADDITIONAL INFORMATION

## FEATURES

- Frequency range 24.05 GHz to 24.25 GHz
- EIRP 13 dBm output power
- I/Q mixers
- RF pre-amplifier 20 dB
- Beam aperture 34 x 80 deg.
- Temperature range : -40 °C to +80 °C

DISCLAIMER: AMG Microwave reserves the right to make modifications to the design and characteristics of this product at any time and without prior notice.  
document reference: AMG0091-1

**AMG**  
MICROWAVE

11, rue Louis de Broglie Z.I PEGASE 22300 LANNION | contact@amg-microwave.com | +33(0)2 96 37 79 54